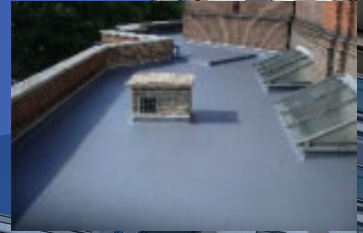


PITCHMASTIC *PmB*

High Performance Structural Waterproofing for Roofs, Plazas & Balconies



PR **PRIME RESINS**

www.primeresins.com



All Encompassing Waterproofing

Pitchmastic PmB is a two-part, hybrid polyurethane elastomer for waterproofing. The spray-applied membrane gels in seconds to provide a seamless, fully adhered barrier to ingress of water and contaminants.

Pitchmastic PmB chemists have formulated a safe, user-friendly, and high-performing product.

Pitchmastic PmB offers clients the perfect balance between design, aesthetics and practical performance with a successful track record of more than 30 years worldwide.

Spray Applied - No Weak Spots

Spray application means no seams or joints, eliminating potential weak spots. The result is a consistent, homogeneous waterproofing solution.

The client achieves the ultimate in protection and peace of mind.

Manufactured in the U.S.A.

Pitchmastic PmB is manufactured in the U.S.A. and available nationwide via a network of approved applicators.

Each application is monitored by Prime Resins to ensure high quality installation and quality assurance.

Key to Symbols



Rapid curing



Approved applicators



Longevity



Chemically resistant



Flexible



Heavy duty

Application Examples

Plaza Decks



Waterproofing under paving, water features and other hard landscaping to protect premises or infrastructure below.

Roofing



A versatile monolithic system, ideal for waterproofing intricate detailing and penetrations. Compatible with most existing substrates. Suitable for green roofs.

Balconies



Complete waterproofing of balconies either as a finished non-slip system or as a buried membrane under decking or paving.

Stairs



Protection to vertical, sloping and horizontal surfaces to give a fully bonded waterproofing layer to features such as stairs.

Tunnels & Walls



Waterproof layer to the walls and soffits of tunnels and culverts as part of a fully integrated lining system.

Special Applications

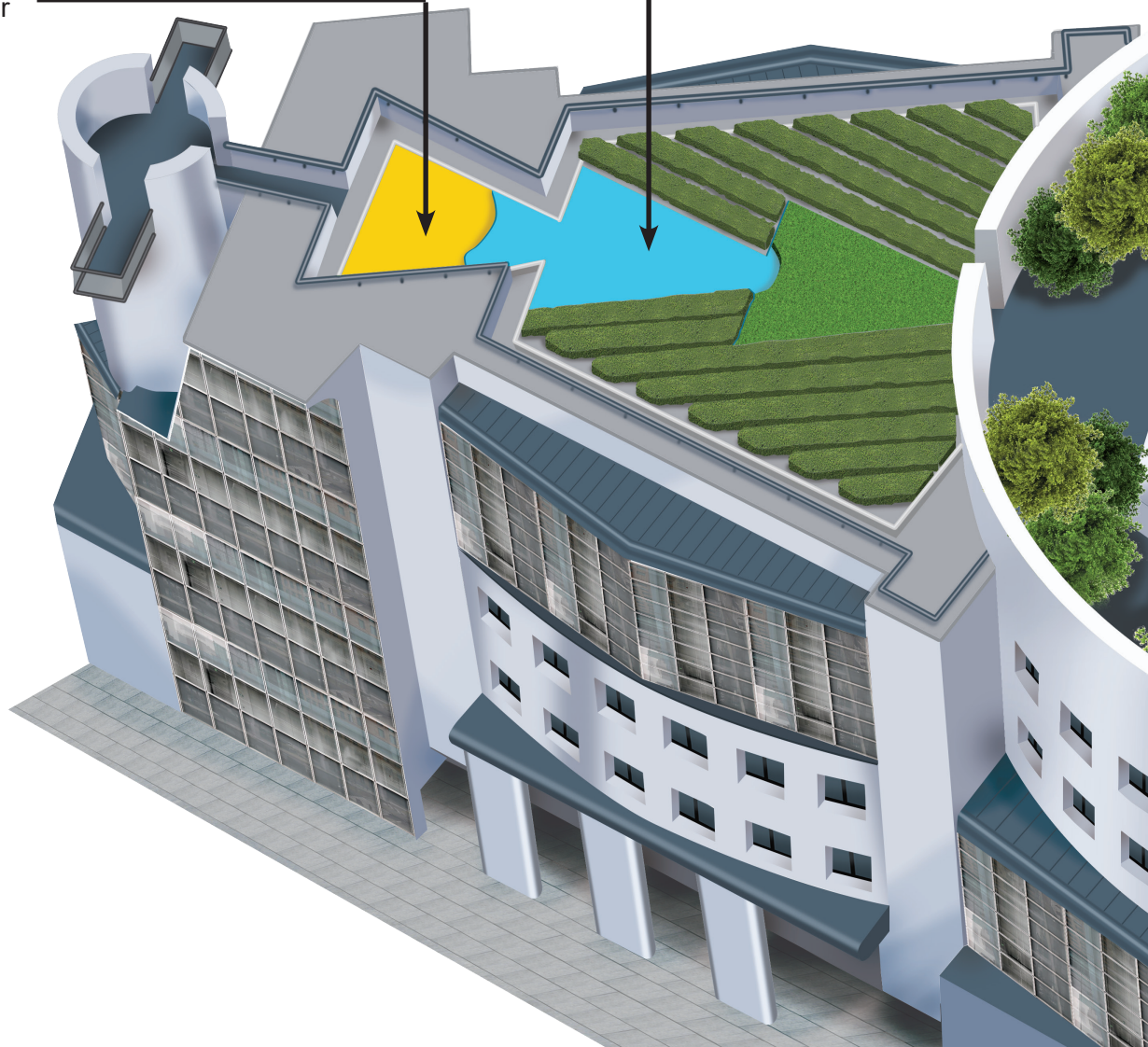


The ease of detailing and the versatility of the Pitchmastic PmB system makes it ideal for even the most intricate of waterproofing requirements.

Durable & Safe Structural Waterproofing

The rapid-curing, spray-applied Pitchmastic PmB system, when installed directly onto the structural deck, has an unrivaled track record for long-term waterproofing of inverted and green roofs as well as plazas in prestigious developments.

Primer





Roofs, plazas and balconies place very high demands on the waterproofing material used, particularly in areas over residential buildings, offices or production plants.

Pitchmastic PmB offers many advantages compared to conventional waterproofing membranes. The spray-applied polyurethane system is long-lasting, withstands mechanical loads, and is totally weather resistant.

Pitchmastic PmB can also be used underneath other coverings, such as gravel, timber decking, paving or grass. Its high resistance to hydrolysis means it can even be used in standing water applications, including water features and decorative pools.

Applications

The **Pitchmastic PmB** system provides a high performance fully-bonded waterproofing membrane to:

- Roofs
- Balconies
- Plazas
- Terraces

Its enhanced performance is ideally suited for:

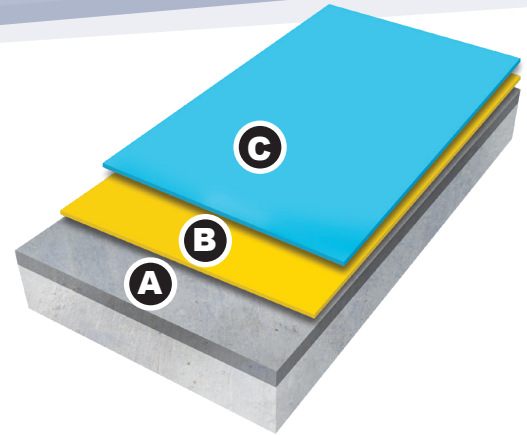
- Landscaping
- Paved areas
- Planters
- Water features
- Green & brown roof applications
- Retention ponds

It also provides protection to:

- Basements
- Plant rooms
- Underground parking facilities
- Tunnels
- Secondary containment

The System

Pitchmastic PmB is a rapid-curing, two-part, spray-applied, durable corrosion protection and waterproofing material. The high performance system contains no fillers or additives and is VOC-free. Once applied, **Pitchmastic PmB** has exceptional bond strength to all commonly used substrates and has a life expectancy in excess of 30 years as a buried waterproofing system.



Key features and benefits:

- 100% effective with proven track record of more than 30 years worldwide
 - Rapid installation and cure allow for application to horizontal, vertical and soffit surfaces
 - Superior crack-bridging and adhesion properties
 - Materials can be applied to new concrete (24 hours to 7 days old), at temperatures as low as 32°F
 - Spray application ensures seamless protection around difficult detailing and penetrations.
- Pitchmastic PmB requires no pre-application termination joints or coves
 - Low odor
 - Excellent chemical resistance
 - Fully tested puncture resistance capabilities
 - Effective root barrier in landscaped areas and green roofs
 - Suitable for use in areas permanently immersed in water



Typical build-up of the Pitchmastic PmB roof system

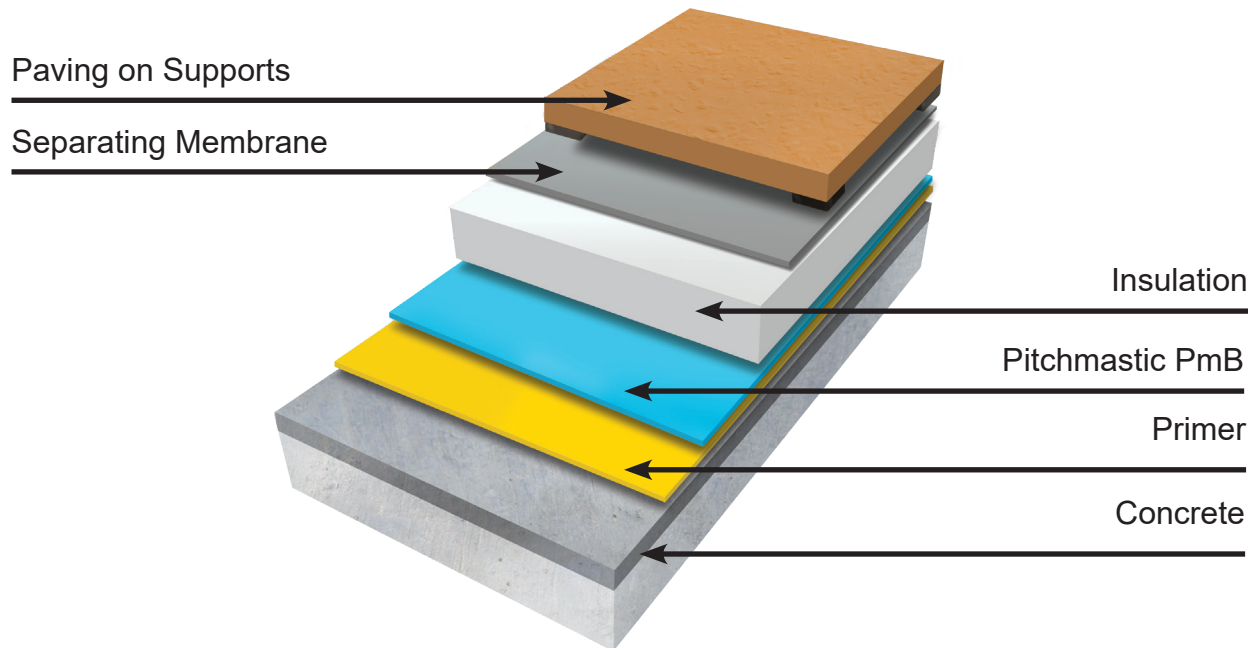
A- Concrete, steel, masonry surface

B- Primer

C- Pitchmastic PmB membrane



Inverted system suitable for plazas & terraces

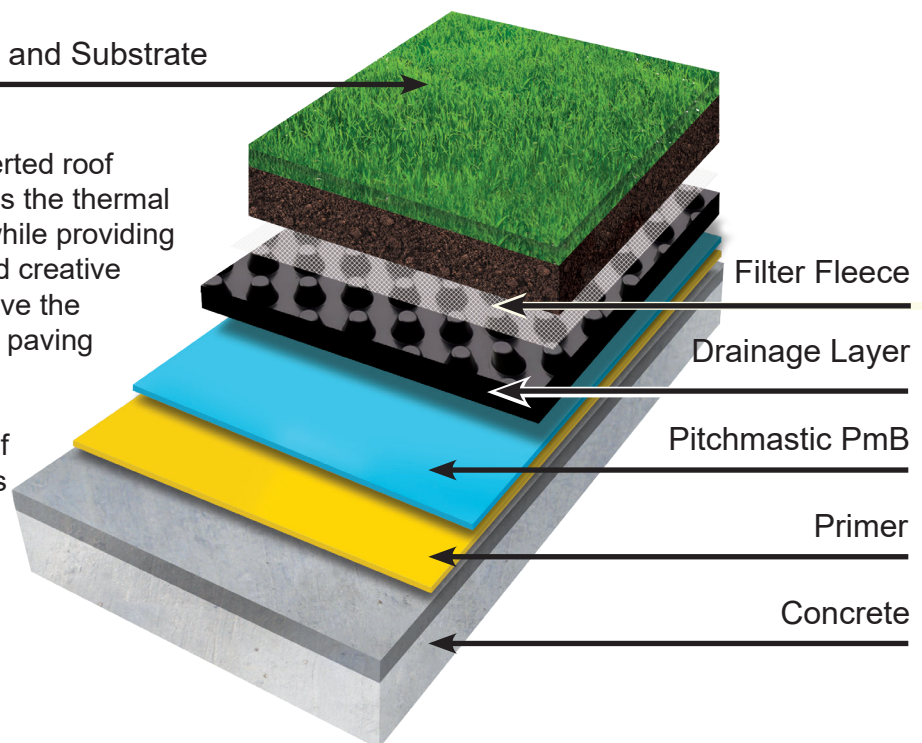


Green roofs

Vegetation and Substrate

The **Pitchmastic PmB** inverted roof system completely upgrades the thermal performance of the roof – while providing long-term waterproofing and creative scope to dramatically improve the appearance of the roof with paving or grass.

It can be used to create roof gardens and terraces and is also suitable for private balconies. It is ideal for new-build applications, but equally suited to refurbishment.





Working in partnership with



Prime Resins Inc.
2291 Plunkett Road
Conyers, GA 30012-3433
www.primeresins.com
T 770.388.0626
E info@primeresins.com



USL America
2291 Plunkett Road
Conyers, GA 30012-3433
www.uslamerica.com
T 770.388.0626
E info@uslamerica.com

*USL America brings
together under one
umbrella some of the
finest civil engineering
and construction solutions
available worldwide.*



A USL Group Company