



---

## PRIME GEL 2800

### *Strippable Surface Seal*

---

#### **DESCRIPTION:**

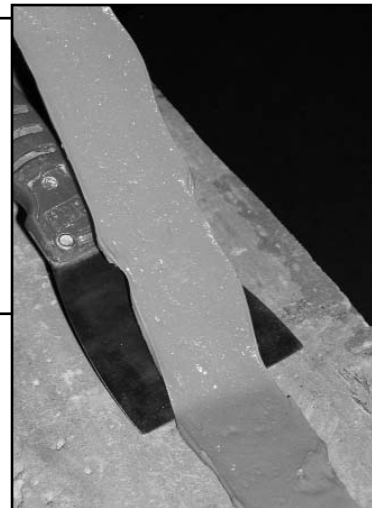
---

**PRIME GEL 2800 SSS** is a two component polyurea, solvent free, strippable surface seal.

#### **APPLICATIONS:**

---

Used to temporarily seal concrete cracks and to secure injection ports prior to injection. Typical applications include basement wall / foundation repair, architectural concrete, precast components, and tilt-up panels.



#### **ADVANTAGES:**

---

- Strips cleanly for quick, easy removal
- Rapid curing, strippable formula allows for quick epoxy crack injection and cleanup
- 1:1 Mix Ratio
- No grinding needed, eliminates dust
- Gel consistency for vertical/overhead applications

#### **PACKAGING:**

---

“Quick-Mix” Cartridges

#### **APPLICATION TECHNIQUES:**

---

**MATERIAL CONDITIONING:** Pre-condition materials to 65°-85° F (19°-30°C) before using.

**SURFACE PREPARATION:** Surface must be dry and free from any moisture. No additional surface preparation is required.

---

#### **PRIME RESINS, INC.**

Office: (770) 388-0626 or (800) 321-7212 / Fax: (770) 388-0936  
2291 Plunkett Road / Conyers, Georgia 30012  
E-mail: sales@primeresins.com / www.primeresins.com

## PHYSICAL PROPERTIES AT 77° F (25° C)

<b>MIX RATIO A:B</b>	1:1 By Volume
<b>COLOR</b>	Part A Amber Liquid Part B Gray Liquid (Dries concrete gray)
<b>INJECT TIME</b>	30 minutes @ 70°
<b>WORKING TIME</b>	8 minutes @ 70°
<b>STRIP TIME</b>	60 minutes
<b>MAX STRIP TIME</b>	5 days (may become difficult to remove on some surfaces after 5 days)
<b>COVERAGE (per Quick-Mix Cartridge)</b>	10 linear feet at 1/8" thick x 2" wide

### INSTALLING MATERIAL:

Apply bead of Prime Gel 2800 SSS along the crack and around base of injection ports. ***Installing a small piece of duct tape at one end of the crack, under the strippable seal, may facilitate stripping on some surfaces by forming a "pull tab".*** Use a trowel to smooth material approximately 1/8" to 1/4" thick over crack. Allow material to overlap crack on top, bottom and sides by minimum of 1" to ensure complete sealing of the crack. The excess material will be stripped away when cured, so do not hesitate to thoroughly cover the crack. Allow material to cure for at least 30 minutes before beginning pressure injection. The sealant is ready for pressure injection when it has cured enough to resist indentation by finger pressure.

**LIMITATIONS:** *Not recommended for applications other than surface sealing. Store in cool, dry place. Surface must be dry, material is moisture sensitive. Shelf life = 6 months.*

**CLEAN UP:** After injection resin has cured, use a trowel to peel up an edge on the bottom corner of the overlap material or pull up duct tape tab. Once an edge has been lifted, grab tightly and pull up to strip away the excess material. A putty knife may be useful on some surfaces to help cleanly strip the cured product. Clean equipment with MEK or Xylene immediately after use. Observe product cautions when using solvents. Clean skin with soap and water. Wash contaminated clothing before re-use.

If you have any questions or comments about any of Prime Resins products or application techniques you may contact us directly at 800-321-7212 Monday through Friday 7:00 AM to 5:00 PM Eastern Time, or visit [www.primeresins.com](http://www.primeresins.com).

**WARRANTY:** Prime Resins warrants its products to be free from manufacturing defects and products meet the published characteristics when tested in accordance with ASTM and Prime Resins standards. No other warranties by Prime Resins are expressed or implied, including no warranty of merchantability or fitness for a particular purpose. Prime Resins will not be liable for damages of any sort resulting from any claimed breach of warranty. Prime Resins' liability under this warranty is limited to replacement of material or refund of sales price of the material. There are no warranties on any product that has exceeded the "shelf life" or "expiration date" printed on the package label.

INT-2800SSS-4/06