

PRECISION LIFT™



**PRIME RESINS**

Injecting Life into Infrastructure

A BARTON INDUSTRIES COMPANY

# PRECISION LIFT™

## Slab Lifting & Soil Stabilization

### GOVERNMENT

Roads

Highways

Bridges

Airports

Dams

Catch Basins

### INDUSTRIAL

Concrete Floors

Mining

Subsurface Utilities

Retaining Walls

### RESIDENTIAL

Patios

Porches

Walkways

Driveways

Pools

Foundations

For decades, the terms Slab Jacking and Mud Jacking have been used to define the act of raising sunken concrete. Using traditional methods the results and degree of precision have varied. In many cases, settlement issues are compounded due to the additional weight of the cement-based grout used to raise the slab.

Today, Precision Lift provides scientific advantages, proven methodologies, and a precise lifting action that can be controlled within 1/8 of an inch or less of your desired elevation.

Advantages for property owners, facility managers and government agencies (DOT):

- **Less Time**
- **Less Weight**
- **Less Disruption**
- **Less Cost**
- **Less Environmental Impact**

Advantages for contractors are identical, and also include these competitive benefits:

- **Faster & Better Service**
- **Higher Profit**
- **Predictable Outcome**
- **Lasting Results**
- **True Differentiator**

#### Precision Lift is a Product Line from Prime Resins

For purposes of lifting slabs, undersealing and stabilizing soils, Prime Resins has formulated two-component, structural polyurethane foams called Precision Lift. Product options exist for desired density and set times. Available in 100 and 600 gallon units, Precision Lift is engineered for large-scale projects such as highways, runways, railroads, bridge approaches and earthen dams.

#### Precision Lift is Proven Procedures from Prime Resins

Documented procedures for lifting slabs and stabilizing soils, known as Prime Practices, are updated regularly.

#### Precision Lift vs. Traditional Cement Slurry

Comparisons:	Cementitious	Precision Lift
Unit Weight	150 PCF	10-12 PCF
Material Set Time	Hours to days	Less than an hour
Impact on Existing Subsoil	Increases overburden stress	Minimal stress
Size of Injection Hole	2" +	3/8"
Preparation of Material Onsite	Mortar mixers, dust control	Material stored in trailer
Clean Out	Wash-out area on site	None required
Shrinkage	Yes (Relative to water)	None
Groundwater	Affects grout composition	Not affected

#### Eliminate the Cause

Settlement destroys the integrity of concrete slabs and foundations. The root causes are often due to poor compaction of fill materials, erosion, high water content (shrink and swell cycles), decaying organic materials or freeze thaw cycles.

Precision Lift fills voids, consolidates fill materials and eliminates water pathways. All of these functions assist in stabilizing and strengthening supporting soils.

#### Compaction Grouting, Permeation Grouting

Compaction grouting is a process by which rapidly expanding polyurethane foam (fully expanded in 30-60 seconds) is injected into the ground. The foam fills voids in the immediate area, fractures the soil with lenses and veins of resins, and compacts the surrounding soil using expansive pressure. Compaction grouting can be done with any of the Precision Lift series products, depending on the density of foam the project requires.

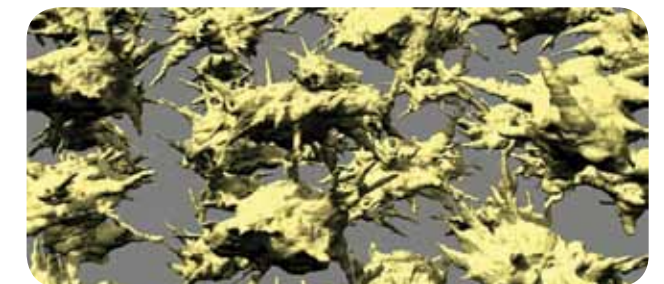
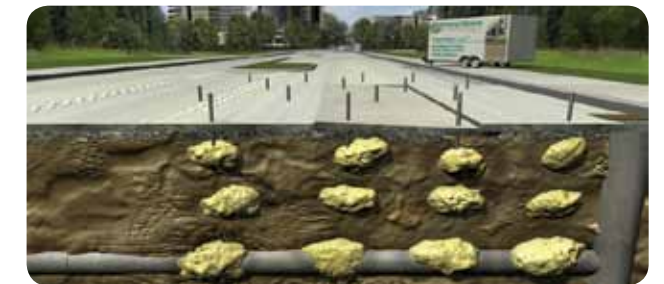
Permeation grouting is typically defined as the flow of a low-viscosity grout into the pores of the soil without displacing or changing the soil structure. The characteristics of the ground are modified with the hardening or gelling of the grout. Permeation grouting serves two purposes, to increase the strength and cohesion of granular soils, and to decrease the permeability of the soil. Prime Flex 910, Prime Flex 920, and Prime Flex Hydro Gel are ideal for permeation grouting applications.

#### Precision Lift is a Long-Term Cure from Prime Resins

Once you have stabilized and consolidated the sub-grade, it is time for the Precision Lift process. A rapidly expanding foam is injected through small diameter holes directly beneath the slab in short bursts. By speeding up the reaction with heat and by controlling the amount of material that goes in beneath the slab, you are able to precisely control how much the slab is lifted.

This procedure requires specialized equipment and a well trained technician. Precision Lift products are designed specifically for this task.

Eliminate these sources of decay and your repair plan will be in sync with our promise-to-customer: *Do it Once, Right and For Good.*





# PRIME RESINS

Injecting Life into Infrastructure

A BARTON INDUSTRIES COMPANY

## PRECISION LIFT™

- Highways & Bridges
- Foundations & Slabs
- Soil Stabilization



[www.primeresins.com/precisionlift](http://www.primeresins.com/precisionlift)

800-321-7212

2291 Plunkett Road  
Conyers, GA 30012