



Solutions for Leaking Manholes

www.primeresins.com



Our Background



Pioneered the use of polyurethane resins for sealing cracks in concrete and helped build that market.



The first to package polyurethane grouts in an easy-to-use Quick-Mix cartridge system over **30 years ago.**

The Prime Resins Difference

Prime Resins is a leading manufacturer of chemical grouts, foams, adhesives and coatings for infrastructure repair & protection. We provide solutions for problems in leak sealing, soil stabilization, slab lifting, structural repair and coatings/secondary containment.

What sets us apart?



Technical expertise: We were the first in our field to offer 24/7 technical support.



Turnaround time: We have the fastest turnaround in the industry. Many shipments go out same business day as the order.



Training: We provide on-site training, application assistance, project consultations, and training seminars at our Head Quarters.



Great value: We offer the best combination of product performance, expertise, and experience.



Solutions focus: We work as partners with our clients to determine causes and to find remedies for your challenges. We are available before and after a purchase to answer questions and support our clients. This approach is in the DNA of the company.

Solutions for Sealing Manhole Leaks



Prime Resins developed the Prime Flex family of quality chemical grout products to stop leaks fast and solve the problems that cause them. Leaks are symptoms that appear at the surface, but the causes are much deeper. Unlike surface patches, Prime Flex products are designed to stop leaks at their source. That's the difference between a temporary fix and a permanent solution.

Four products solve problems in manholes:

Prime Flex 900 XLV

Reacts with water to form a tough, flexible hydrophilic foam to seal leaking cracks and joints.

Prime Flex 920

Rigid, hydrophobic foam expands up to 2,500% to fill voids, stop gushing water and fill joints.

Prime Flex Hydro Gel SX

Hydrophilic gel forms either a flexible water-tight foam or an impermeable gel that seals cracks and pipe penetrations..

AR 800

Reacts with water to form a highly elastic hydrophilic gel for leak seal and soil stabilization. Set time can be adjusted up to 30 minutes.

Need products that are tested to meet NSF/ANSI standard 61-5 for contact with potable water? We've got you covered. Ask your sales rep for more information.

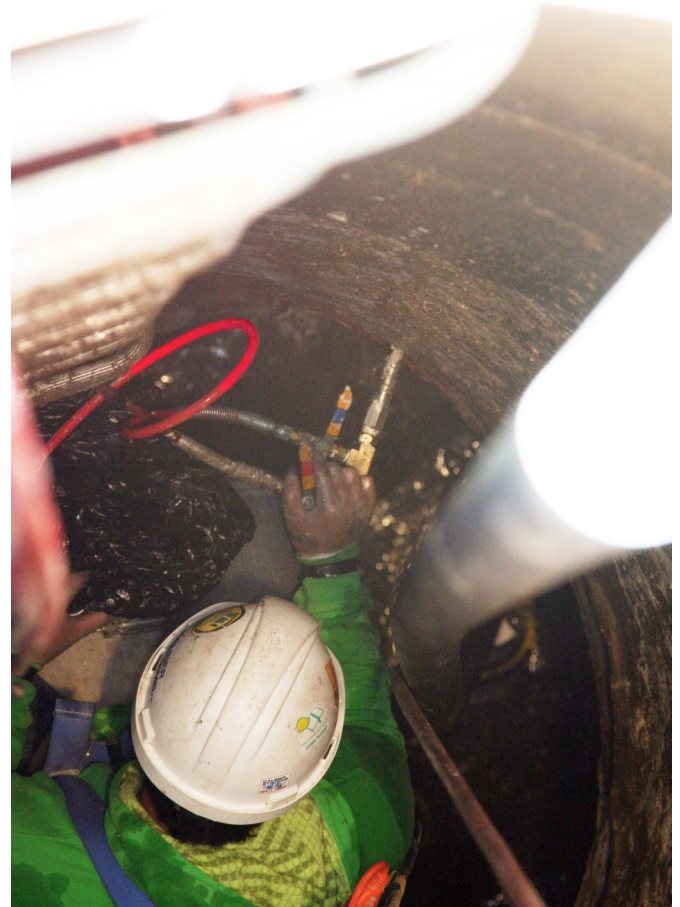
Prime Resins is your complete source for manhole rehabilitation chemicals.

WE HAVE IT ALL:

Chemical grouts available from cartridges to totes

Accessories and pumps

Technical consultation

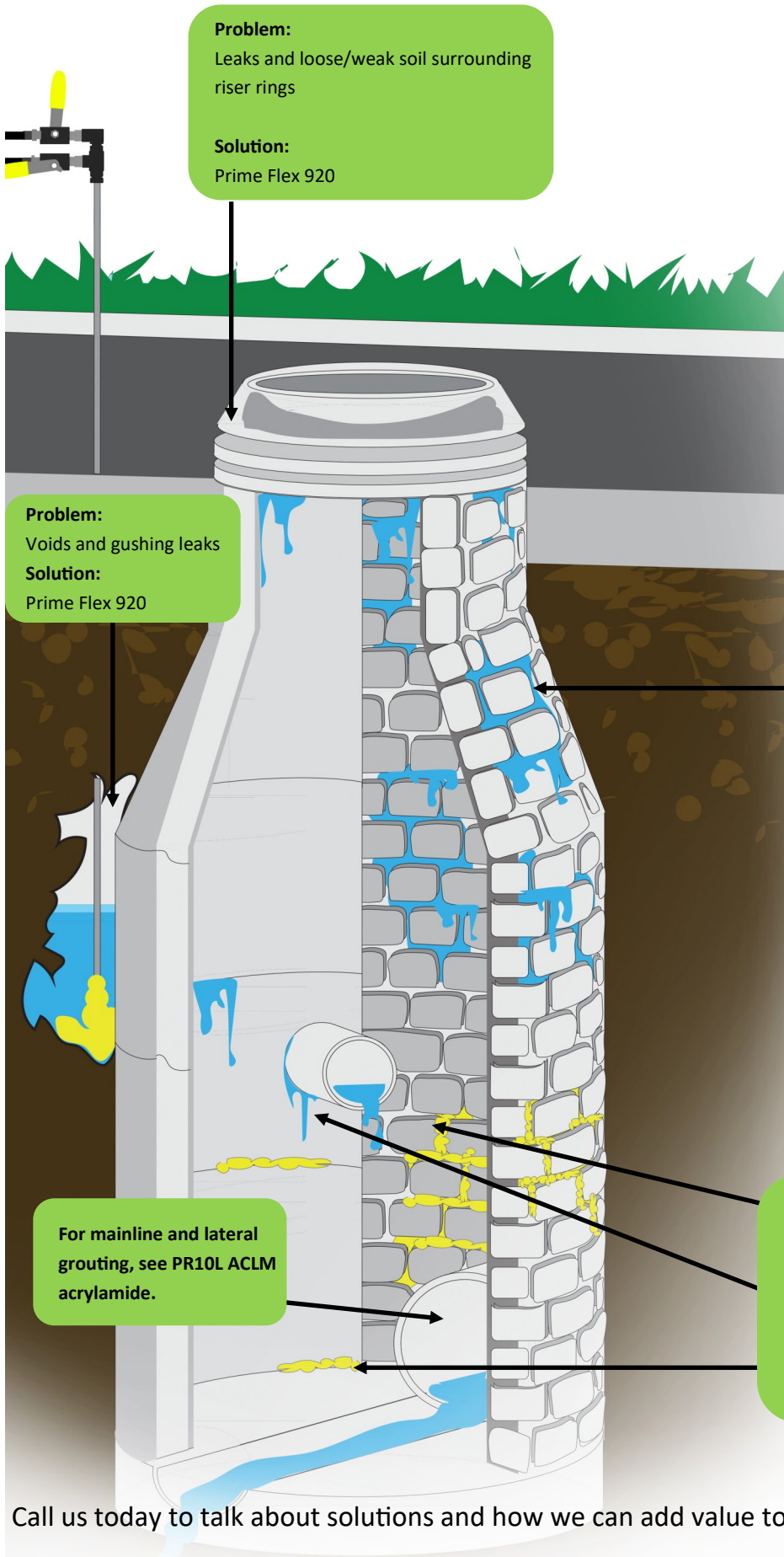


24/7 Technical Support

800-321-7212



Solutions for Sealing Manhole Leaks



Problem:
Leaks and loose/weak soil surrounding riser rings

Solution:
Prime Flex 920

The cost of doing nothing:

Using a very common 1/8" crack as an example, this would equate to 5 gallons per minute of unwelcome water.

5 gal/min x 60 minutes = 300

300 gal/hr x 24 hours = 7,200 gal

7,200 gal/day x 365 = 2,628,000 gal

2.6m gal/yr x cost to treat = \$\$\$

At \$3/1000 gal = \$7,884/year

The cost to treat is much higher than that to repair.

Can you afford to do nothing?

Problem:
Voids and gushing leaks

Solution:
Prime Flex 920

Problem:
Leaks and loose/weak surrounding soil

Solution:
Prime Flex AR 800

We have a long track record of success. Prime Resins has been providing proven infrastructure repair solutions for 35 years. Our products work, our products last, our expertise and 24/7 technical support are second to none.

For mainline and lateral grouting, see PR10L ACLM acrylamide.

Problem:
Leaking joints and pipe penetrations.

Solution:
Prime Flex 900 XLV
Prime Flex Hydro Gel SX
AR 800

Call us today to talk about solutions and how we can add value to your projects: **800-321-7212**

primeresins.com

Filling pipe annulus



Precision Fill™ is a two-component, low exotherm, polyurethane foam used to fill voids . The resin produces a closed cell, high density structural polyurethane foam.

Filling the gap:

Using Precision Fill in conjunction with fiberglass liners

When new fiberglass liners are installed inside of old and deteriorating manholes, it will undoubtedly leave a gap (usually around 3 to 5") between the liner and the manhole. Precision Fill™ is used to fill this space due to its high expansion rate.

It is also hydro-insensitive and, because of its slower set time, allows for a more consistent pour and prevents void pockets from forming.

Precision Fill can be injected using a 1:1 ratio pump such as our portable Patriot or Rebel series pumps. In some cases, it can also be batch mixed and poured. It is supplied in convenient and portable 10 gallon units and will not add weight or induce stress on manholes or liners like concrete will. With the ability to set in at little as 15 minutes, a fast turn-around is easy. There is no need to wait hours like with concrete.

The process of lining and filling the annular space cost roughly 1/3 less than tear-out and replacement. Other recommended uses for Precision Fill include undersealing and stabilizing concrete slabs, compaction grouting of soils, stabilizing soils, and filling voids behind pipes, walls, manholes and other structures.



Head Office

2291 Plunkett Road

Conyers, GA 30012

T: 770-388-0626

E: info@primeresins.com

W: www.primeresins.com